



Annual Report 2008-2009



UNIVERSITÉ
LAVAL

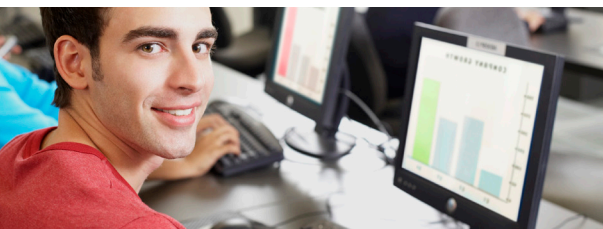


Table of Contents

Mission, Vision, Values **1**

A word from the Rector **2**

A word from the Chair of the Board of Directors **3**

Université Laval at a glance **4**

Financial statements **6**

Honorary degree recipients **8**

Emeritus professors **9**

Board of Directors and University Council **10**

Management team **12**



L'Université Laval¹

Mission

Université Laval, the oldest French-language university in North America, is an institution of international repute and high academic standards that contributes to society's growth and development

- By training qualified, responsible individuals who promote change
- By advancing and sharing knowledge in a dynamic environment of research and creativity
- A university committed to its community that builds productive partnerships with all sectors of society while staying true to its fundamental mission, independence, and responsibilities
- A model university that gives all members of its community the chance to grow, develop their potential, and establish themselves in a dynamic, stimulating, diverse, and respectful institutional setting
- A modern university that is committed to sustainable development and manages its resources responsibly

Vision

The members of the university community share a stimulating common vision of the future: to become one of the best universities in the world. To that end, Université Laval also intends to stand out by being

- A complete university recognized as an establishment with an international reputation for its students and high quality educational programs
- A university on the cutting edge of research and creation that distinguishes itself on the national and international scenes through its exceptional achievements
- An open university that promotes dialog, cooperation, and the participation of its members in major world issues

Values

The university community's actions are geared to bolstering student success and reflecting the following fundamental institutional values:

- Respect for the diversity of people, societies, knowledge, and ways of thinking
- Humanistic and ethical approach
- Development of critical thinking and judgment
- Personal and community involvement and leadership
- Promotion of creation, innovation, and excellence

¹ Horizon 2012 : Orientations de développement de l'Université Laval



A WORD from the Rector

In 2008–2009 Université Laval put in place a number of ambitious measures to promote high quality teaching and research against a backdrop of sustainable development.

After advocating the adoption of a university-wide sustainable development policy, the University Council approved the addition of a section to the Academic Regulations decreeing that all undergraduate programs must introduce students to sustainable development issues. After reviewing the favorable conclusions of a feasibility study on the project, the council also recommended that a sustainable development profile be developed.

In order to meet the needs of today's world, University Council members greenlighted the creation of new training programs, including an undergraduate doctorate in pharmacology, an undergraduate biomedical degree, and a new heart surgery training program (from July 2010). Our university is the second in Canada to change its bachelor's pharmacology program to an undergraduate doctorate.

Over the course of 2008–2009, a number of courses and nine complete programs were added to our distance education program, including an interdisciplinary master's in art that is one of a kind in Quebec and a specialized graduate degree in nutrition, functional foods, and health. University Council members also approved a draft master's program in environmental law, which has been offered in conjunction with Université Paris 1 since fall 2009. The program is a shining example of our university's desire to play a greater role internationally.

Research and creation activities also claimed the limelight, with the University Council recommending the adoption of a policy on research and creation integrity and conflicts of interest, a policy that has become necessary due to globalization and strong growth in the scientific research sector. Seventeen new research chairs were therefore created last year under the PAIR program (Programme pour l'avancement et l'innovation de la recherche) to set up 100 new chairs for which the total funding will be \$100 million. Boasting close to \$280 million in research funds, Université Laval remains Canada's seventh biggest research and creation university.

In 2008–2009, recruitment grew by 0.6% for full time equivalent students at a time of demographic upheaval when competition between universities is fierce.

The year 2008–2009 was a fruitful one, and I am sure that the years ahead will be equally prolific as we continue to work together, provide top-notch education in step with today's world, and carry out cutting-edge research and creation activities in order to ensure that Université Laval remains one of the world's top-ranked universities for years to come.

Denis BRIÈRE, Rector

A WORD

from the Chairman of the Board



For the board, 2008–2009 was marked by the adoption of the university's Sustainable Development Policy. The policy seeks to create a sustainable future for and with members of the university community. It is built around five main areas of action, one of which involves working sustainable development into the university's development action plan, as well as its training, learning, research, and knowledge sharing activities. This new decision-making instrument will enable us to ensure all our sustainable development decisions and actions are consistent and effective. The Sustainable Development Policy, which will be implemented with a three-year action plan, has bolstered Université Laval's position as a sustainable development leader.

Board members welcomed the findings of a study showing the viability of a project for new student residences on campus. The board tasked university management with developing a concept adapted to current student needs. Board members also agreed in principle to plans to upgrade and renovate Pavillon Alexandre-Vachon, an \$85 million project that will transform the building into a real showcase for science and engineering.

Finally, despite the decline in the financial markets and the major losses sustained by employee pension plans, hard work by all involved meant that 2008–2009 budget targets were met. Also with a view to sound governance and careful management, the board approved another balanced operating budget for the year ahead.

I would like to thank each and every board member, along with the management team and all university staff for their cooperation and commitment to meeting our goals throughout the year.

A handwritten signature in black ink, which appears to read 'Pierre Genest'. The signature is fluid and cursive.

Pierre GENEST, Board Chair

L'UNIVERSITÉ LAVAL

at a glance



Students¹

44,194 students were enrolled in credited programs and courses at Université Laval between May 1, 2008, and April 30, 2009.

37,675 students were registered for the fall term in 2008 (including credited continuing education courses), as follows:

- **26.5% graduates**
- **58.8% women and 41.2% men**
- **4,044 foreign students**, of which 2,345 had a study permit and 1,699 were permanent residents

200 student associations and two umbrella organizations: CADEUL for undergraduates and AELIÉS for graduate students

Education

17 faculties

60 departments, schools, and institutes

384 undergraduate and graduate programs

3 profiles

(international, entrepreneurial, and cooperative)

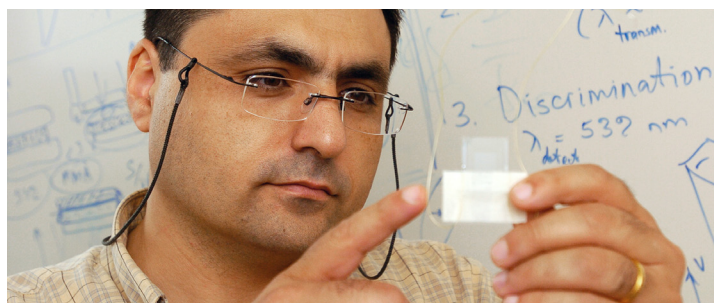
Some 450 distance courses (90% online) and over 100 under development

Staff²

Almost 11,000 staff as at October 15, 2008:

- **Senior management: 11**
- **Internal auditor and ombudsman: 2**
- **Faculty and department management: 117**
- **Administrative management and executives: 127**
- **Professors: 1,385**
- **Lecturers and teaching assistants: 1,162**
- **Research professionals: 799**
- **Teaching support staff: 2,835**
- **Administrative staff: 814**
- **Support staff: 1,787**

Almost 2 000 clinical and associate professors





Research

\$278.6 million in research funds³

7 affiliated hospitals

36 research centers recognized by the University Council

79 Canada Research Chairs

19 industrial research chairs

37 partnership chairs

8 research institutes

77 other groups

Host to 3 Networks of Centers of Excellence (NCE):

- GEOIDE—GEOmatics for Informed DEcisions
- ArcticNet—Research on the North
- CIPI—Canadian Institute for Photonic Innovations



Diplomas awarded

1,309 certificates

4,936 bachelor's degrees

1,427 master's degrees

290 doctorates

4 undergraduate diplomas

669 master's diplomas

Campus

Université Laval's 1.2 km² main campus is one of the finest in the province. Three-quarters of the campus is made up of green spaces, woods, and recreational areas.

Almost 40 buildings linked by a network of over 5 km of pedestrian tunnels

Two buildings in the historic borough of Old Québec, one in the Lower Town (School of Visual Arts) and the other in the Upper Town (School of Architecture)

Établissement vert Brundtland-certified student residences providing **2,400 rooms on campus**

5 million library documents

One of Canada's biggest university sports complexes

Outreach

224,000 graduates working in Québec and all around the world⁴

48 alumni clubs worldwide

One of the country's top sports universities, with some 350 student athletes competing in 13 Rouge et Or clubs with a long tradition of excellence



¹Source: Registrar's Office

²Source: Bureau de planification et d'études institutionnelles

³Source: Research Infosource – www.researchinfosource.com/top50.shtml

⁴Source: Association des diplômés de l'Université Laval

FINANCIAL Statements

year ended May 31, 2009 (in thousands of dollars)

	OPERATING FUND		RESTRICTED FUNDS	
	2009	2008	2009	2008
	\$	\$	\$	\$
REVENUE				
Tuition fees	66 818	61 396	–	–
Community services	9 880	9 655	9 466	8 202
External services	24 375	23 726	–	–
Net investment income	2 332	3 668	771	445
Student services and aide	17 662	15 723	11 945	12 230
Ancillary services	17 113	14 605	–	–
MELS subsidy	347 545	332 074	8 555	7 502
Donations				
Fondation de l'Université Laval	387	640	7 942	7 220
Other organizations	–	59	–	–
Other subsidies and revenues	12 654	11 579	182 391	170 086
Capital assets from the revenue of the operating fund and the restricted fund	–	–	–	–
	498 766	473 125	221 070	205 685
EXPENSES				
Teaching and independent research	310 137	299 901	–	–
Community services	8 526	8 111	14 610	12 965
Research	13 838	12 589	181 323	171 318
Support services	129 651	118 145	3 711	4 366
Student services and aide	17 526	16 531	17 610	15 879
Ancillary services	16 852	13 948	–	–
Renovations and redevelopment	–	–	–	–
Interest on debts	2 092	3 649	–	–
Amortization of other assets	–	–	–	–
Amortization of capital assets	–	–	–	–
	498 622	472 874	217 254	204 528
Excess (deficiency) of revenues over expenses before exceptional items	144	251	3 816	1 157

CAPITAL ASSETS FUND		ENDOWMENT FUND		SUBSCRIPTION FUND		TOTAL	
2009	2008 Redressé	2009	2008	2009	2008	2009	2008 Redressé
\$	\$	\$	\$	\$	\$	\$	\$
—	—	—	—	—	—	66 818	61 396
—	—	—	—	—	—	19 346	17 857
2 189	2 045	—	—	—	—	26 564	25 771
36	70	665	1 692	—	412	3 804	6 287
—	—	—	—	—	—	29 607	27 953
—	—	—	—	—	—	17 113	14 605
43 938	44 500	—	—	—	—	400 038	384 076
—	—	—	—	—	—	8 329	7 860
195	325	422	901	—	—	617	1 285
12 561	10 118	—	—	—	—	207 606	191 783
22 047	37 604	—	—	—	—	22 047	37 604
80 966	94 662	1 087	2 593	—	412	801 889	776 477
—	—	—	—	—	—	310 137	299 901
—	—	—	—	—	—	23 136	21 076
—	—	—	—	—	—	195 161	183 907
—	—	644	781	827	472	134 833	123 764
—	—	—	—	—	—	35 136	32 410
—	—	—	—	—	—	16 852	13 948
2 575	1 989	—	—	—	—	2 575	1 989
26 782	27 697	—	—	—	—	28 874	31 346
53	53	—	—	—	—	53	53
62 135	53 639	—	—	—	—	62 135	53 639
91 545	83 378	644	781	827	472	808 892	762 033
(10 579)	11 284	443	1 812	(827)	(60)	(7 003)	14 444

HONORS

Recipients in 2008-2009

Honorary Doctorate Recipients



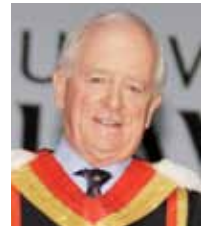
MICHEL CASEVITZ
Hellenist, Greek linguistics specialist and humanist
Honorary Doctor



CÉLINE DION
World-famous singer and philanthropist
Honorary Doctor



VIRGIL P. ELIZONDO
Theologian and founder of the Mexican American Cultural Center
Honorary Doctor of Theology



YVES L. FORTIER
Chairman and Senior Partner, Ogilvy Renault
Honorary Doctor of International Studies



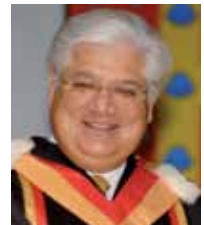
JEAN LÉGARÉ
Member Emeritus, Canadian Arthritis Network
Honorary Doctor



BERNARD LABADIE
Music Director, Les Violons du Roy
Honorary Doctor of Music



GUY LALIBERTÉ
Founder, Cirque du Soleil
Honorary Doctor



MIKE LAZARIDIS
Engineer, Innovator, and CEO, Research in Motion (RIM)
Honorary Doctor



GINETTE LEMIRE RODGER
Senior Vice President of Professional Practice and Chief Nursing Executive at the Ottawa Hospital, the University of Ottawa Heart Institute, and the Ottawa Hospital Rehabilitation Center
Honorary Doctor of Science



ISMAÏL SERAGELDIN
Manager, Bibliotheca Alexandrina
Honorary Doctor of Letters



MAURICE TANGUAY
President, Ameublements Tanguay Inc. and founder, Fondation Maurice Tanguay
Honorary Doctor of Administration



PHILIPPE VAN PARIJS
Director, Hoover Chair of Economic and Social Ethics, Université catholique de Louvain
Honorary Doctor of Philosophy

Les professeurs émérites



NICHOLAS BARDEN
Faculty of Medicine



CLAUDE BELLEAU
Faculty of Law



CARLOS A. BRAILOVSKY
Faculty of Medicine



FRANÇOIS CASTAIGNE
Faculty of Agricultural
and Food Sciences



RICHARD CLOUTIER
Faculty of Social Sciences



HUGUETTE DAGENAIS
Faculty of Social Sciences



BLANCHE DANSEREAU
Faculty of Agricultural
and Food Sciences



DENYS DELÂGE
Faculty of Social Sciences



JEAN HUOT
Faculty of Science
and Engineering



MARC R. LAVERDIÈRE
Faculty of Agricultural
and Food Sciences



CHRISTIAN LAVILLE
Faculty of Education



JEAN-CLAUDE MÉTHOT
Faculty of Science
and Engineering



JEAN-JOSEPH MOISSET
Faculty of Education



CHRISTINE PIETTE
Faculty of Arts



MARIE SIMARD
Faculty of Social Sciences



MICHEL TÊTU
Faculty of Science
and Engineering

BOARD of Directors and University Council

as at May 31 2009

Board of Directors

VOTING MEMBERS

(Section 71 of By-laws)

RECTOR

Denis BRIÈRE*

EXECUTIVE VICE RECTOR, DEVELOPMENT

Éric BAUCE*

DEAN

Jean-Paul LAFOREST

PROFESSORS

Thierry OLLEVIER*

Jean-Claude DUFOUR*

Georges BEAUDOIN

LECTURER

Nicole BLOUIN

GRADUATE STUDENT

Sylvain MERCIER

UNDERGRADUATE STUDENTS

Nicholas POIRIER*

Adrien YERGEAU

DEPARTMENT MANAGER

Claude MAILHOT*

PROFESSIONAL STAFF MEMBER

Paul THÉBERGE

SUPPORT STAFF MEMBER

Sophie BOUCHARD

GRADUATE APPOINTED

BY UNIVERSITÉ LAVAL

ALUMNI ASSOCIATION

Richard DION

INDIVIDUAL APPOINTED

BY UNIVERSITÉ LAVAL FOUNDATION

Élisabeth PINARD

INDIVIDUALS APPOINTED BY BOARD OF DIRECTORS

Pierre GENEST, président

Marie-Dominic LABELLE*

Jean LECLERC

Renée LAFLAMME

Marthe LACROIX

Hélène SIMARD

Louise TURGEON

INDIVIDUALS APPOINTED BY THE GOVERNMENT

Michèle DROUIN

Jean-Guy JACQUES

Marie-France POULIN*

NON-VOTING MEMBERS

(Section 72 of By-laws)

VICE RECTORS

Bernard GARNIER*

Edwin BOURGET*

Michel BEAUCHAMP*

Josée GERMAIN*

SECRETARY GENERAL

Monique RICHER*

VOTING MEMBERS

(Section 90 of By-laws)

RECTOR

Denis BRIÈRE

VICE RECTORS

Éric BAUCE

Edwin BOURGET

Michel BEAUCHAMP

Bernard GARNIER

Josée GERMAIN

SECRETARY GENERAL

Monique RICHER

DEANS

Richard PLEAU

(Urban Planning, Architecture, and Visual Arts)

Sylvio NORMAND

(Law)

Robert BEAUREGARD

(Forestry geography and Geomatics)

Thierry BELLEGUIC

(Arts)

Pierre Jacob DURAND

(Medicine)

André FOURNIER

(Dentistry)

Paul CADRIN

(Music)

Jean-Pierre GRÉGOIRE

(Pharmacy)

Luc LANGLOIS

(Philosophy)

Robert W. MANTHA

(Administrative Sciences)

University Council

* Also member of the Executive Committee

Jean-Paul LAFOREST
(Agricultural and Food Sciences)

Marcel MONETTE
(Education)

Guy GENDRON
(Science and Engineering)

Diane MORIN
(Nursing Sciences)

François BLAIS
(Social Sciences)

Marc PELCHAT
(Theology and Religious Sciences)

**DEAN OF THE FACULTY
OF GRADUATE STUDIES**
Marie AUDETTE

**PROFESSORS
Urban Planning, Architecture,
and Visual Arts**
Éric KAVANAGH

Law
Sylvette GUILLEMARD

Forestry geography and Geomatics
Jean BOUSQUET

Arts
Jacques RIVET
Alain LABERGE

Medicine
Jacques BERGERON
Luc BÉLANGER
Hélène MOFFET
Fabien GAGNON
Pierre DÉRY

Music
André PAPILLON

Pharmacy
Jean LEFEBVRE

Administrative Sciences
Pascal LANG
Benny RIGAUX-BRICMONT

Agricultural and Food Sciences
Jean-Claude DUFOUR
Diane PARENT

Education
Yann LE BOSSÉ
Thérèse HAMEL

Science and Engineering
Jacques LAROCHELLE
Patrick HÉBERT
Thierry OLLEVIER
Georges BEAUDOIN

Social Sciences
Gilles GAGNÉ
Philippe LE PRESTRE
Joane MARTEL

RESEARCH PROFESSIONAL
Sylvain JUNEAU

LECTURERS
Mireille BOISVERT
Jean-François BROUDEHOUX

UNDERGRADUATE STUDENTS
Paul-Émile AUGER
Martin BLAIS
Pierre-Olivier GIRARD
Barbare POIRIER

GRADUATE STUDENTS
Sylvain MERCIER
Matthieu JUNEAU
Louis-Alexandre ALLEN-DEMERS
Fanny TREMBLAY-RACICOT

PROFESSIONAL STAFF MEMBER
Patrice GOSSELIN

SUPPORT STAFF MEMBER
Fabienne RIVARD

COLLEGE LEVEL REPRESENTATIVE
Danielle MALBOEUF

OUTSIDE RESEARCH REPRESENTATIVE
Vacant

**DIRECTORS OF RECOGNIZED RESEARCH
CENTERS OR INSTITUTES**
Michel G. BERGERON
Mario FAFARD

**DEPARTMENT MANAGER
OR MEMBER OF MANAGERIAL STAFF**
Johanne MORNEAU

NON-VOTING MEMBERS
(Section 91 of By-laws)

COMMITTEE CHAIRS

Academic Committee
François POTHIER

Research Committee
Alain PRUJINER

Student Affairs Committee
Éric PHILIPPE

**DIRECTOR GENERAL
OF UNDERGRADUATE STUDIES**
Serge TALBOT

**DIRECTOR GENERAL
OF CONTINUING EDUCATION**
Pierre DIONNE

**DIRECTOR OF AN INSTITUTE
Institut québécois
des hautes études internationales**
Paule GAUTHIER

MANAGEMENT Team

as at May 31, 2008



Mr. Edwin BOURGET

Vice Rector, Research and Creation

Ms. Nicole LACASSE

Deputy Vice Rector, Academic
International Activities

Mr. Claude PARADIS

Deputy Vice Rector, Human
Resources

Standing, left to right:

Mr. Michel BEAUCHAMP

Vice Rector, Human Resources

Ms. Monique RICHER

Secretary General

Ms. Josée GERMAIN

Vice Rector, Administration
and Finance

Mr. Bernard GARNIER

Vice Rector, Academic
and International Activities

Mr. Denis BRIÈRE

Rector

Mr. René LACROIX

Deputy Executive Vice Rector,
Information Systems

Mr. Éric BAUCE

Executive Vice Rector, Development

Ms. Christiane PICHÉ

Deputy Vice Rector, Research
and Creation

Project management and writing: Chantal Malenfant, Office of the Rector

Translation: Anglocom

Collaborators: Finance Department, Institutional Studies and Planning Office, Office of the Rector

Graphic design and layout: Department of Reprography

Photos: Steve Deschênes et Yan Doublet (Rouge et Or), Marc Tawil (ArcticNet) et Marc Robitaille

Photo search: Fabienne Rivard, Communications Office

Published by: Office of the Rector

www.ulaval.ca



